



COVID-19 Vaccine Update

San Francisco Department of Public Health

Last Updated: January 14, 2021





Presentation Outline

- Vaccine Overview
- Vaccine Distribution & Status
- Accomplishments, Challenges & Engagement

Vaccine Overview

There are currently two approved vaccines: Pfizer & Moderna



F.D.A. Clears Pfizer Vaccine, and Millions of Doses Will Be Shipped Right Away

An initial shipment of about 2.9 million doses of the vaccine will be sent around the United States over the next week.



Pfizer has said it will be able to supply up to 25 million doses before the end of the year, and 100 million total vaccines by March. Justin Tallis/Agence France-Presse — Getty Images

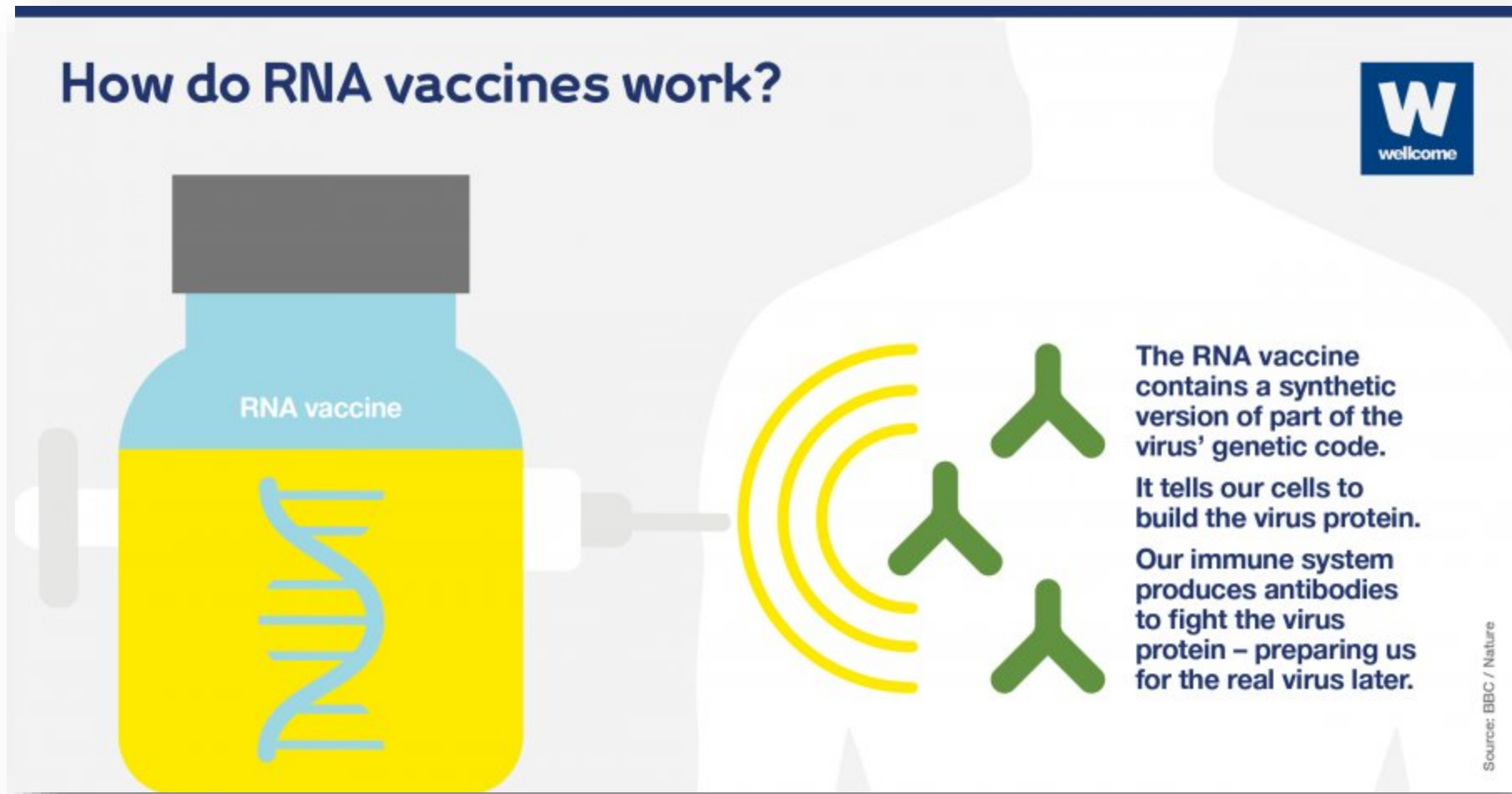
F.D.A. Panel Endorses Moderna's Covid-19 Vaccine

An advisory group's recommendation will mean millions more Americans can be inoculated, extending protection against Covid beyond major urban areas into rural and suburban regions.



Moderna's vaccine has the advantage of being distributed more widely because it can be stored at normal freezer temperatures and, unlike the Pfizer-BioNTech vaccine, does not require ultracold storage. Cody O'Loughlin for The New York Times

The vaccine teaches our body's immune system to recognize and neutralize the virus



Infographic source: <https://wellcome.org/news/seven-vital-questions-about-rna-covid-19-vaccines-pfizer-biontech-moderna>

The vaccine is safe and effective

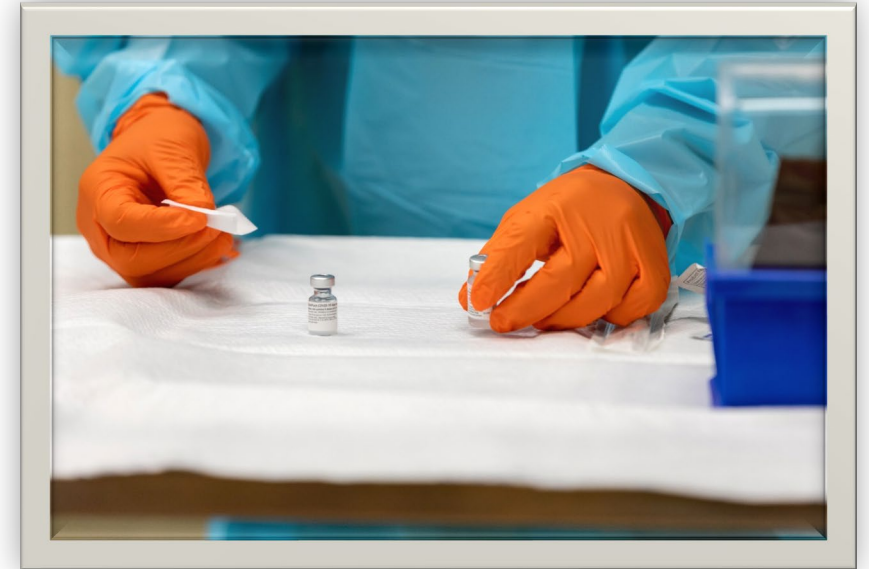


- The first two COVID-19 vaccines available have shown **94-95% efficacy** against a person becoming ill with COVID-19
 - Based on large clinical trials
 - Extraordinarily effective at protecting you from the virus
- The vaccine was developed so quickly because medical experts have been working on vaccines for the coronavirus family *for years*. They did not have to start from scratch.
- *Every* study, *every* phase, and *every* trial was reviewed by the FDA and a safety board.
- Serious side effects are extremely rare.

The vaccine is a critical tool to slow the spread of COVID-19 and end the pandemic



- Most people will receive the vaccine from their healthcare or insurance provider.
- At this time, the general population will likely have access to the vaccine in later 2021.
- Currently, COVID-19 vaccines are not recommended for children.
- COVID-19 vaccines, including their administration, are free (covered by insurance).
- Even after being vaccinated, you still need to wear your mask, adhere to physical distancing and thoroughly wash your hands.



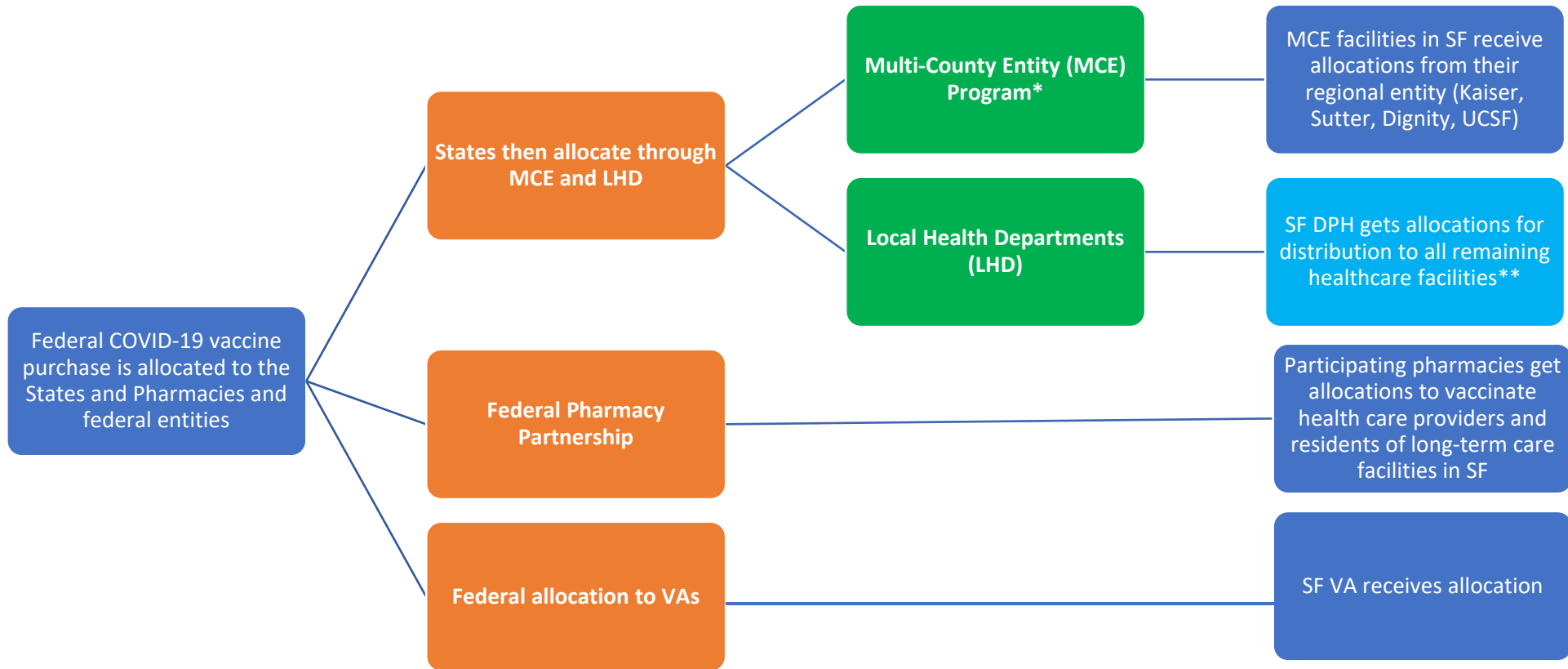
Vaccine Distribution & Status

The State and Federal Government are driving the prioritization and allocation process



- SFDPH does not decide who gets vaccinated first.
- San Francisco is *required* to follow the national and state recommendations for prioritization and allocation of doses.
- SFDPH is responsible for allocating and administering only a portion of the vaccines that are delivered to San Francisco.

Pathways of COVID-19 Vaccine into SF



*Note that the MCE program was not operational during the first allocation, so all doses went to LHD for redistribution to local acute hospitals.

** SFDPH currently has visibility into this allocation only.

Most facilities will receive the vaccine from the Federal Gov & CDPH

CCC & DPH are responsible for allocating and administering only a portion of the vaccines that are delivered to San Francisco.

Phases of Vaccine Rollout



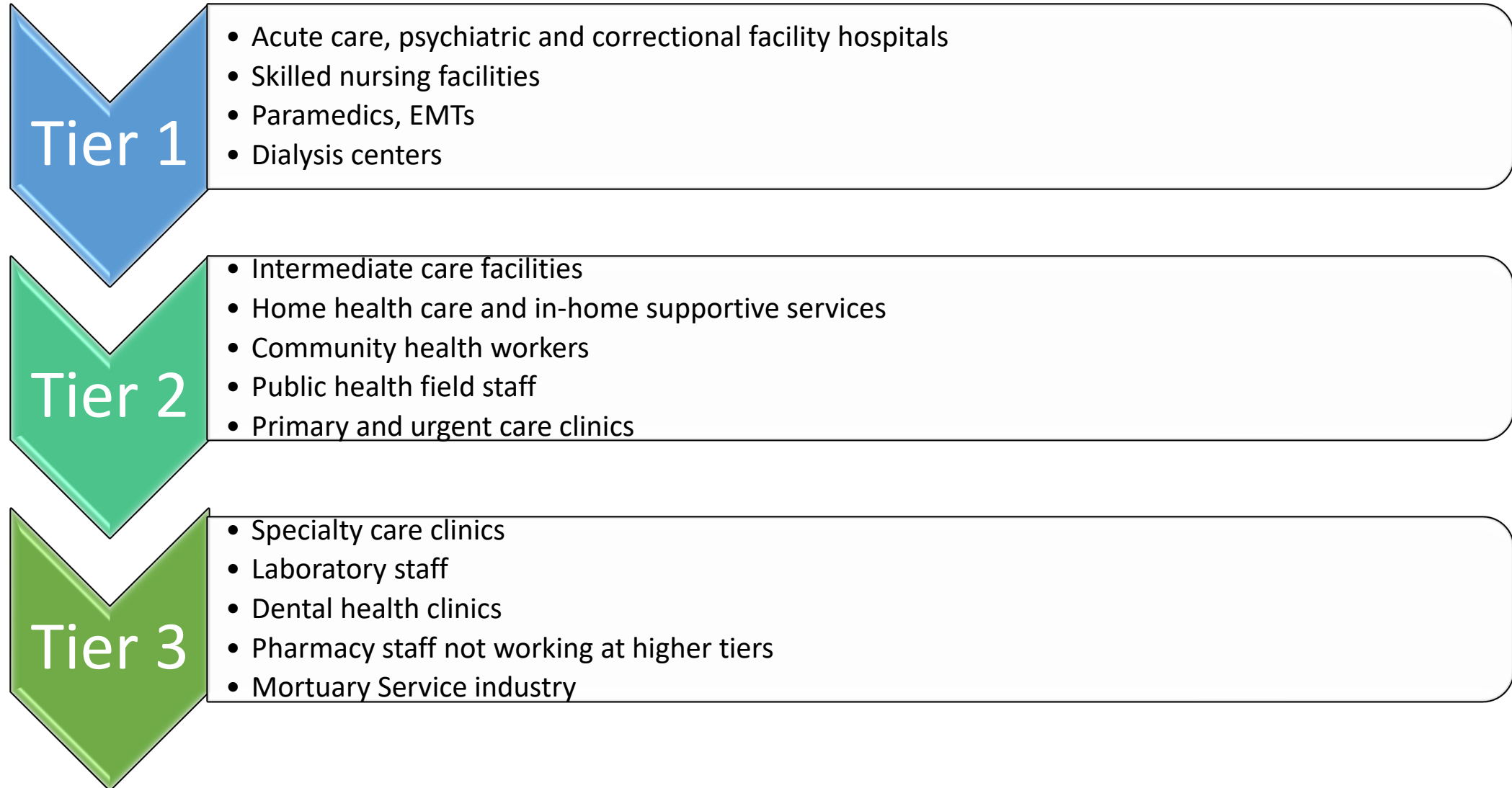
California's allocation plan is based on a phased approach while the vaccine is in limited supply.

Distribution will adjust as volume of the vaccine increases

- **Current state: Phase 1a — Limited doses available**
 - Highly targeted administration to achieve coverage in priority populations
 - Goal: Reach initial critical populations
- **Future state — Large number of doses available**
 - Sufficient supply to meet demand; shift to routine strategy
 - Goal: Reach general population and ensure access



CDPH Allocation Strategy within Phase 1a



California's Phases 1b and 1c



Phase 1b

Tier 1

- Individuals 75 and older
- Those at risk of exposure at work in the following sectors:
 - education
 - childcare
 - emergency services
 - food and agriculture

Tier 2

- Individuals 65-74 years of age
- Those at risk of exposure at work in the following sectors:
 - transportation and logistics
 - industrial, commercial, residential, and sheltering facilities and services
 - critical manufacturing
 - congregate settings with outbreak risk: incarcerated and homeless

Phase 1c

- Individuals 50 -64 years of age
- People 16-49 years of age and have an underlying health condition or disability which increases their risk of severe COVID-19
- Those at risk of exposure at work in the following sectors:
 - water and wastewater
 - defense
 - energy
 - chemical and hazardous materials
 - communications and IT
 - financial services
 - government operations / community-based essential functions

<https://covid19.ca.gov/vaccines/>

Vaccine distribution principles



- Equity
- Speed
- Partnerships

Accomplishments, Challenges & Engagement

Vaccinating SF



- We are well underway protecting the most medically vulnerably populations.
- >11,000 San Francisco healthcare workers have been vaccinated by DPH and the San Francisco Health Network, the majority of whom are employees of the City and County of San Francisco.
- Vaccinations are ongoing in long-term care facilities through the CDC Pharmacy Partnership for Long-Term Care Program.
- DPH/CCSF is working to establish relationships with the health systems to support vaccination of priority groups.



Challenges



- No unified federal or state system for vaccine delivery
- Unclear how much vaccine will be allotted and when
- SFDPH does not have visibility on vaccines that are allocated to health care systems – we only know how much we have administered and to whom we've administered the vaccine.
- Data management
- Counties are moving at different speeds
- Vaccine characteristics: 2 doses, 3-4 weeks apart, needs to be ultra-cold/frozen



Community engagement

- Community engagement and information sharing is key to vaccination effort
- We are using multiple channels of communication to provide transparent and clear information to all communities
- We are convening a working group consisting of community organizations and stakeholders
- COVID Command Center has active liaisons to engage with communities (Equity & Neighborhoods branch, Community branch, Joint Information Center)

Thank you

For more information

<https://sf.gov/covid-19-vaccine-san-francisco>

<https://covid19.ca.gov/vaccines/>