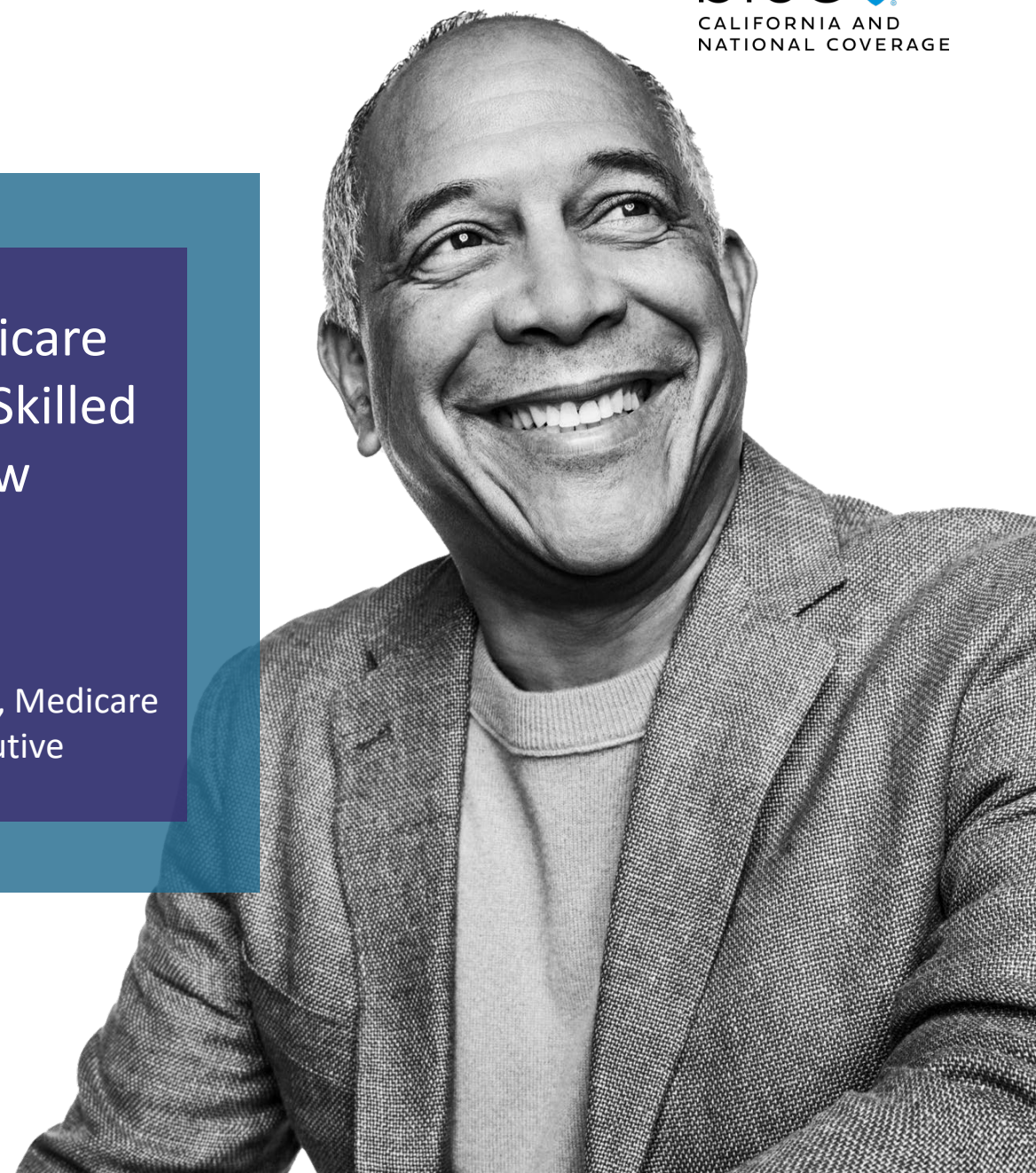




Blue Shield Medicare Advantage PPO Skilled Nursing Overview

Presented by
Charles Lee, Sr. Manager, Medicare
Liz Knape, Account Executive



Skilled Nursing Facility Selection Process & Criteria

The decision to send a patient to a skilled nursing facility (SNF) and the selection of a specific facility is a collaborative process that primarily involves the **patient, their family, and the hospital's discharge planning team** (including social workers and nurse case managers).

The Doctor's Role

The physician determines if a patient meets the medical criteria for skilled nursing care and provides the official order for admission. This determination is based on a medical assessment and involves the following considerations:

- **Medical Necessity:** The services must be reasonable and necessary for the diagnosis or treatment of the patient's condition.
- **Daily Skilled Care:** The patient must need daily skilled nursing or therapy services (e.g., intravenous medications, complex wound care, physical therapy 5-7 days a week).
- **Condition Relation:** The care must be for a condition that was treated during the hospital stay or a new condition that developed while in the SNF.
- **Expected Improvement:** For rehabilitative therapies, there must be an expectation that the patient's functional capabilities will improve significantly in a reasonable timeframe.
- **Care Plan:** The doctor works with the SNF staff to develop a care plan with individual, realistic goals and a discharge plan.

Skilled Nursing Facility Selection Process & Criteria

Selection Process and Criteria:

- Identify the needs of the patient and the services available at facilities. Not all facilities provide the same services. Not all facilities will have available beds for the patient needs.
- Referrals are made to appropriate facilities by the hospital.
- Considerations are made for patient support systems. Examples include if the member will be going to stay closer to their own home, or family because they may need more help when discharged.
- **Once a facility is chosen and a patient is accepted, the SNF will coordinate with Blue Shield to obtain authorization based on the medical necessity documentation.**
- The patient is then transferred to the facility when they are ready for discharge from the hospital.

Points to remember:

- A person can choose to go to a facility but based on occupancy, and their needs, the facility may not be able to accommodate the person. For example, they may not have respiratory beds available for a new trach patient.
- Some facilities may only accept patients with specific rehabilitation needs, such as spinal injury.

Blue Shield Skilled Nursing Facility Status

- 15 total Skilled Nursing Facilities (SNFs) in the County of San Francisco
 - 11 of these are in the BSC GMAPD-PPO network, and 4 are not contracted with Blue Shield.
 - The 4 not contracted are Laguna Honda, Hayes Convalescent, Laurel Heights, and San Francisco Towers.
 - Blue Shield reached out to Laguna Honda and confirmed:
 - » Patients must be covered by traditional Medicare or Medi-Cal, and
 - » They do not contract with Medicare Advantage or commercial insurance plans
- SFHSS retirees have the flexibility to go to out-of-network providers as long as they are Medicare participating and agree to accept Blue Shield members.

Blue Shield Skilled Nursing Facility Status

	Facility Name	BSC Contracted	Licensed Bed Count	Estimated Beds Available*
1	San Francisco Campus for Jewish Living	Yes	374	11
2	Central Gardens Post Acute	Yes	92	5
3	Pacific Heights Transitional Care Center	Yes	120	6
4	Lawton Skilled Nursing & Rehabilitation Center	Yes	68	12
5	The Avenues Transitional Care Center	Yes	140	10
6	San Francisco Post Acute	Yes	53	3
7	Sequoias San Francisco Convalescent Hospital	Yes	50	11
8	California Pacific Medical Center – Davies Campus	Yes	38	8
9	San Francisco Health Care	Yes	168	59
10	Victorian Post Acute	Yes	90	4
11	City View Post Acute	Yes	180	7
12	Laguna Honda	No	649	214
13	Hayes Convalescent Hospital	No	34	4
14	Laurel Heights	No	32	1
15	San Francisco Towers	No	27	11

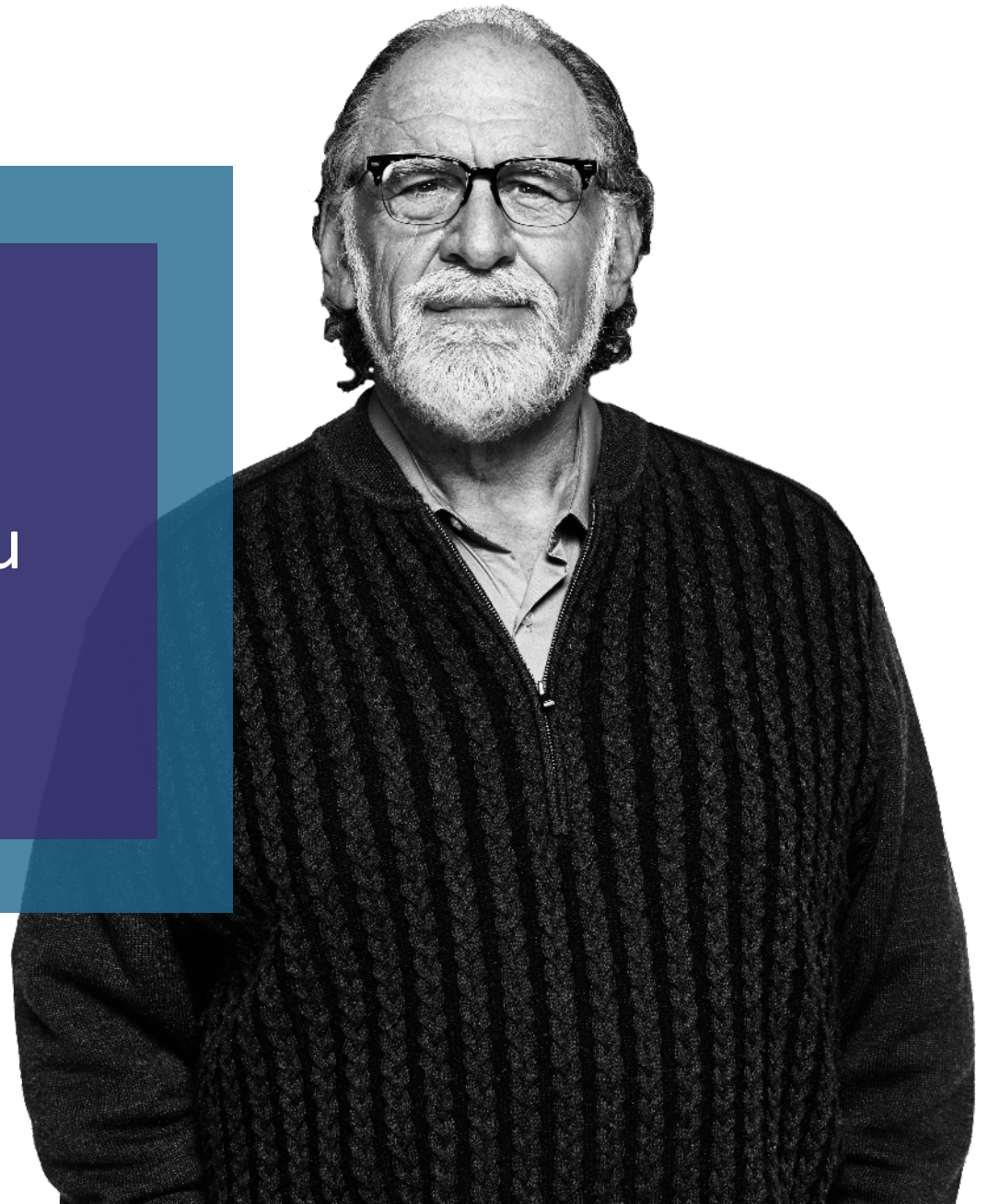
*Estimated based on discussions with the SNFs and publicly available sources. There may be a significant disparity between Licensed versus Usable beds. Subject to change.

Blue Shield Skilled Nursing Facility Status

- As of October 2025, **322** SFHSS Medicare retirees live within the County of San Francisco and have been admitted to a SNF in 2025.
 - 219 (68%) were admitted to a SNF within the County of San Francisco
 - 71 (22%) were admitted to a SNF in San Mateo County
 - 15 (5%) were admitted to a SNF in Alameda County
 - The remaining 17 (5%) were admitted to a number of other counties, mostly not bordering SF, so they likely had reasons other than capacity that they were admitted there
- For the non-Medicare retirees in the PPO, there were 4 SNF admissions in 2024 and 3 in 2025 YTD.
 - None of these members live in SF, although one of them has a home address in San Mateo County and used a SNF in SF
 - Every other member was admitted to a SNF in the same county as their home residence



Thank you





Blue Shield of California is an independent member of the Blue Shield Association